

# Diamond Island Regatta

## Unofficial Courses (Ref. Only)

### NORTH WIND

#### Course Description

- 10 A, CB(p), A
- 11 A, SL(p), A
- 12 A, CB(p), DM(p), A
- 13 A, SL(p), DM(p), A

### NORTH-NORTHWEST WIND

#### Course Description

- 16 A, EP(p), DM(p), A
- 17 A, EN(p), DM(p), A

### NORTHWEST WIND

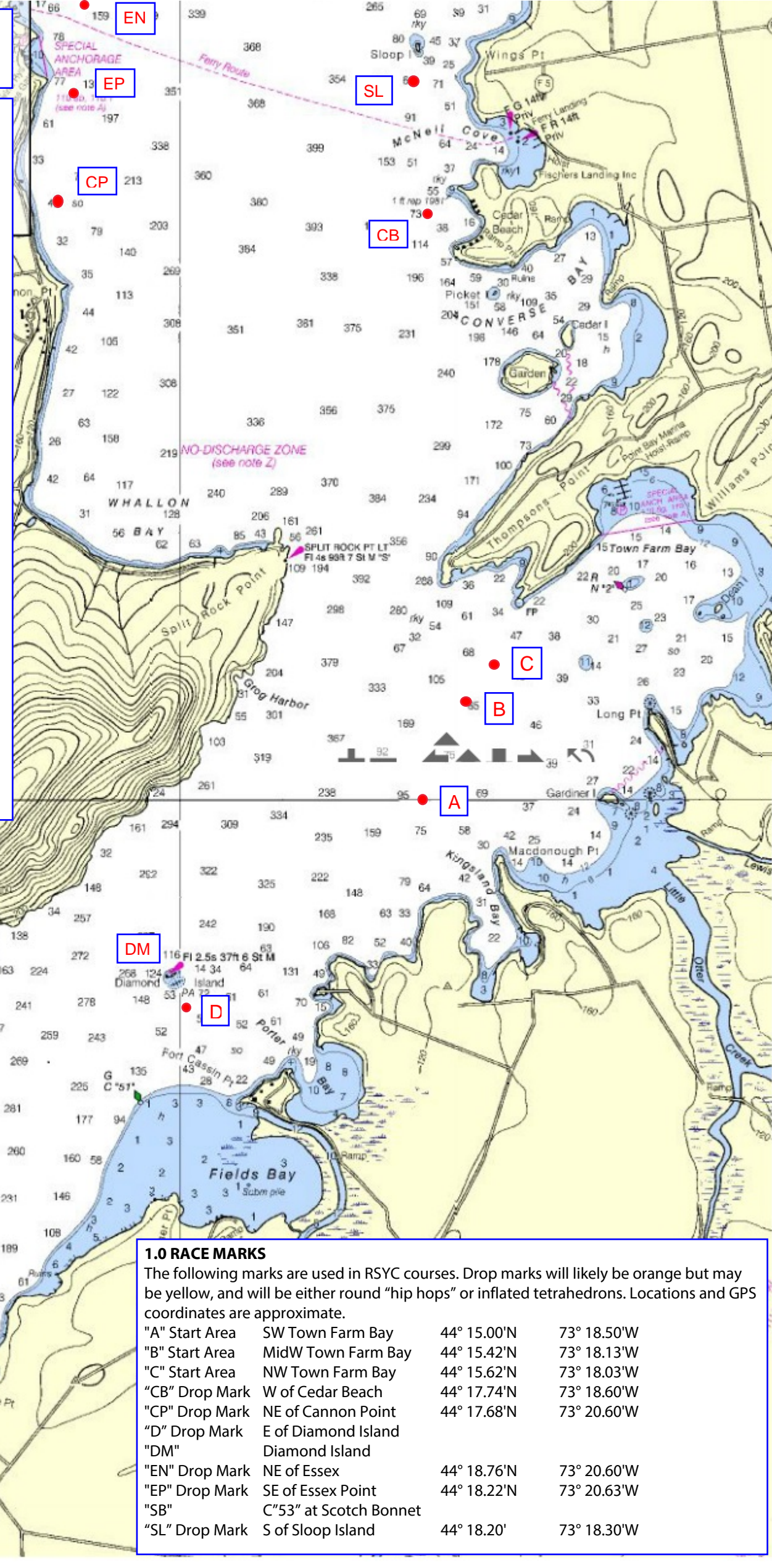
#### Course Description

- 20 B, CP(p), DM(p), B
- 21 B, EP(p), DM(p), B
- 22 B, CP(p), B(p), CP(p), B

### SOUTHWEST WIND

#### Course Description

- 30 A, DM(s), CB(s), A
- 31 C, DM(s), CB(s), C
- 32 A, DM(s), SL(s), A
- 33 C, DM(s), SL(s), C
- 34 A, DM(s), CB(s), DM(p), A
- 35 C, SB(p), C
- 36 C, SB(p), D(p), C
- 37 A, DM(s), SL(p), DM(p), A
- 38 C, DM(s), CB(p), DM(p), C
- 39 C, DM(s), SL(p), DM(p), C



### 1.0 RACE MARKS

The following marks are used in RSYC courses. Drop marks will likely be orange but may be yellow, and will be either round "hip hops" or inflated tetrahedrons. Locations and GPS coordinates are approximate.

"A" Start Area	SW Town Farm Bay	44° 15.00'N	73° 18.50'W
"B" Start Area	MidW Town Farm Bay	44° 15.42'N	73° 18.13'W
"C" Start Area	NW Town Farm Bay	44° 15.62'N	73° 18.03'W
"CB" Drop Mark	W of Cedar Beach	44° 17.74'N	73° 18.60'W
"CP" Drop Mark	NE of Cannon Point	44° 17.68'N	73° 20.60'W
"D" Drop Mark	E of Diamond Island		
"DM"	Diamond Island		
"EN" Drop Mark	NE of Essex	44° 18.76'N	73° 20.60'W
"EP" Drop Mark	SE of Essex Point	44° 18.22'N	73° 20.63'W
"SB"	C"53" at Scotch Bonnet		
"SL" Drop Mark	S of Sloop Island	44° 18.20'	73° 18.30'W